



Summer 2006 Edition

# NCommunicator Catch the Wave

## President's Pen



### Topics of Interest:

- Charge Session
- Roster of New Board Members
- Distinguished Scholar Named
- Fall Conference
- Words from our Past Presidents
- Focus on HOT TOPIC: FACEBOOK

Got an article or idea for the next NCCPA NCommunicator?

Email submissions to Elizabeth M. Hand, at [hande@ecu.edu](mailto:hande@ecu.edu).

It is with great excitement that I take on my role as President of NCCPA. I have been in Student Affairs related work since graduate school (and there's no need to say when that was...) and have spent the last 8 years in Wilmington, North Carolina. I have been truly blessed in my life, and ever since moving to Wilmington from the Chicago area, I have come across great professionals from across the state and am privileged to take on this new role. Although I've been in the state since 1998, it wasn't until 2002 that I joined, the year of Julie Beck's presidency. I approached Leslie Rand-Pickett (at UNCW at the time) and said I wanted to join NCCPA, but I didn't just want to be a member; I told her that if I'm going to join an organization, I want to get involved and not just attend conferences. Four years later I now serve as president of this great organization.

NCCPA has an excellent reputation in the State/International Division of ACPA, with winning the Outstanding State/International Division Award again in March 2006. It was my honor to write the nomination - and it truly was easy to "brag" about our accomplishments. When you look at everything this organization has to offer, you should feel proud to be a part of this highly honored group. I am also proud to announce that Shelly Myers of East Carolina University received the 2006 ACPA Outstanding State/International Division Leader Award. She is truly a valuable asset to NCCPA and a great mentor to follow in the presidential role.

As we look to the year ahead, NCCPA will continue many of its traditional conferences. Our Fall Conference will take place in Charlotte, NC, in November 2006 and will focus around HOT TOPICS. The LEAD conference

looks to be heading to Wingate University in mid February 2007, with the Administrative Support Conference in April 2007, and the President's Forum in May 2007 at Barton College. We hope to continue the theme of Hot Topics throughout the year.



Diane S. Reed, NCCPA President

There will also be some changes coming our way with approval of our membership - a reorganization of the executive board. With recommendations from the current board members who hold these positions, the board is looking to eliminate the Community College and First Year Experience chairs. The current chairs put many hours and ideas into these positions with little or no responses. After much discussion with the 2006-2007 executive board, we came to a unanimous decision to eliminate these positions and bring it forward to the membership for a vote at the general business meeting in November. If you do have any questions, please don't hesitate to ask any of the board members.

This year's executive board met in early June 2006 to come up with our charge for this coming year. Thorough discussions included membership, goals, the

strategic plan, and how to plan for future years to make executive board transitions go much more smoothly. We are all truly excited to be a part of NCCPA and to lead this organization into yet another great year.

I thank you for your trust in me as a leader and will work very hard for, and stay committed to, NCCPA. Please don't hesitate to email me suggestions or call me if you need assistance. As members of NCCPA, I hope you will get more involved by joining a committee, volunteering to help with conferences, or by letting us know when new staff join your department. If you are new to the state, we welcome you to join NCCPA and share your expertise with us. Let's have a great year and *Catch your wave to NCCPA...*

Diane Sledden Reed, President



# Snap Shots from Wilmington

*We are ready  
for a great year!  
Your NCCPA Board*



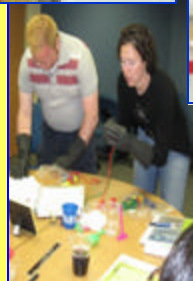
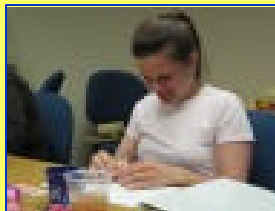
**Out on the Town**  
Justin Williams, Nikkia Sheppard and Angela Cobos,



**Dinner at Diane's house**  
Jennifer Cabacar, Michelle Liberman, Nikkia Sheppard, and Theresa Mathis



**Cheers to a new year!**  
J-Boy Williams



**Team Building Games and Activities**



## NCCPA Board Roster 2006-2007

**PRESIDENT**

Diane Reed  
Career Development  
UNC Wilmington  
601 S College Street  
Wilmington, NC 28403-5924  
(910) 962-3174 (phone)  
(910) 962-4257 (fax)  
[reedd@uncw.edu](mailto:reedd@uncw.edu)

**PRESIDENT-ELECT**

Theresa Mathis  
Leadership  
Barton College  
Box 5603  
Wilson, NC 27893  
(252) 399-6389 (phone)  
(252)-399-6548 (fax)  
[tmathis@barton.edu](mailto:tmathis@barton.edu)

**CO-PAST PRESIDENTS**

Shelly Myers  
Academic Enrichment  
East Carolina University  
Brewster B-103  
Greenville, NC 27858  
(252) 328-2645 (phone)  
(252) 328-6657 (fax)  
[myersm@ecu.edu](mailto:myersm@ecu.edu)

Julie Beck  
Student Activities  
Mount Olive College  
Lois K. Murphy Regional Center  
634 Henderson Street  
Mount Olive, NC 28365  
(919) 658-3084  
[jbeck@moc.edu](mailto:jbeck@moc.edu)

**SECRETARY**

Amanda Denny  
Leadership  
Appalachian State University  
218 Eric Lane  
Apt, G-29  
Boone, NC 28607  
(828) 268-0225 (phone)  
[amandapaigedenny@yahoo.com](mailto:amandapaigedenny@yahoo.com)

**TREASURER**

Glenda Bebbber  
Associate Dean of Students  
Wingate University  
Campus Box 5013  
Wingate, NC 28174  
(704) 233-8244 (phone)  
(704) 233-8017 (fax)  
[gbebbber@wingate.edu](mailto:gbebbber@wingate.edu)

**MEMBER-AT-LARGE –  
ADMIN. CONFERENCE**

Krista Wilhelm  
Student Life-Leadership Development  
East Carolina University  
255 Mendenhall Student Center  
Greenville, NC 27858  
(252) 328-4718 (phone)  
(252) 328-1092 (fax)  
[wilhelmk@ecu.edu](mailto:wilhelmk@ecu.edu)

**MEMBER-AT-LARGE -MEMBERSHIP**

Jennifer Cabacar  
Academic Advisor  
East Carolina University  
2300 Harold H. Bate Building  
Greenville, NC 27858  
(252) 328-1084 (phone)  
(252) 328-0988 (fax)  
[cabacarj@ecu.edu](mailto:cabacarj@ecu.edu)

**MEMBER-AT-LARGE -DIVERSITY**

Michelle Lieberman  
Off Campus Housing & Relations  
East Carolina University  
201 Erwin  
Greenville, NC 27858  
(252) 328-2847 (phone)  
(252) 328-1413 (fax)  
[liebermanm@ecu.edu](mailto:liebermanm@ecu.edu)

**MEMBER-AT-LARGE -MEMBERSHIP**

Nikkia S. Sheppard  
Housing/Residence Life  
UNC Chapel Hill  
201 Carr Building  
CB# 5500  
Chapel Hill NC 27599-5500  
(919) 962-0312 (phone)  
(919) 962-1006 (fax)  
[nikkia\\_sheppard@unc.edu](mailto:nikkia_sheppard@unc.edu)

**LEADERSHIP CONSORTIUM**

Open

**MEMBERSHIP**

Amber Dees  
Housing / Residence Life  
Carr Building CB #5500  
Chapel Hill, NC 27599-5500  
919-962-7602 (phone)  
919-962-1006 (fax)  
[adees@email.unc.edu](mailto:adees@email.unc.edu)

**FALL CONFERENCE**

Heather Campbell (co-chair)  
Leadership  
Wingate University  
Student Engagement  
CB 5013  
Wingate, NC 28174



(704) 233-8243 (office)  
(704) 233- (fax)  
[hcampbel@wingate.edu](mailto:hcampbel@wingate.edu)

**FALL CONFERENCE**

Angela Cobos (co-chair)  
Student Activities  
Barton College  
400 ACC Drive  
Wilson, NC 27893  
(252) 399-6372 (phone)  
(252) 399-6548 (fax)  
[acobos@barton.edu](mailto:acobos@barton.edu)

**GRAD/NEW PROFESSIONALS**

Justin Williams  
Housing/Residence Life  
UNC Greensboro  
Housing & Residence Life  
PO Box 26170  
Greensboro, NC 27402-6170  
336.334.1773 (phone)  
336.334.5680 (fax)  
[Justin\\_Williams@uncg.edu](mailto:Justin_Williams@uncg.edu)

**COMMUNICATIONS - NEWSLETTER**

Elizabeth Hand  
Registrar  
East Carolina University  
A 102B Brewster Building  
Greenville, NC 27858  
(252) 328-6001 (phone)  
(252) 328-6657 (fax)  
[hande@ecu.edu](mailto:hande@ecu.edu)

**COMMUNICATIONS - TECHNOLOGY**

Adeea Rogers (Co-Chair)  
Student Life-Leadership Development  
East Carolina University  
18 Mendenhall Student Center  
Greenville, NC 27858  
(252) 328-4759 (phone)  
(252) 328-1092 (fax)  
[rogersa@ecu.edu](mailto:rogersa@ecu.edu)

## 2006 NCCPA Distinguished Scholar Named:

*Dr. Richard Eakin has been named the NCCPA 2006 Distinguished Scholar. Dr. Eakin has served as a professor in Education Leadership for doctoral students at East Carolina University since 2001. He served as Chancellor of East Carolina University from 1987 to 2001 and led the university through an unparalleled period of growth and achievement. Prior to his Chancellorship at ECU, Dr. Eakin worked at Bowling Green State University in various capacities including Vice Provost for Student Affairs, Vice President for Institutional Planning and Student Affairs and Vice President for Planning and Budgeting.*

*Dr. Eakin's service at the local, state and national level is to be admired. He is a personable, ethical leader. His nominator wrote, "He adopts a 'lead from the middle' philosophy that encourages mid-level administrators in higher education to model leadership in their present position not just in the future. He encourages and promotes leadership not only through this academy but also in the classroom..."*

As an example of Dr. Eakin's leadership abilities note the following accomplishments from an executive summary of his career. Along with an increase in average test scores and class ranks, enrollment at ECU climbed from 14,878 to approximately 18,000, during Dr. Eakin's tenure as Chancellor. U.S. News & World Report ranked ECU among the top ten Southern public universities for two years during his tenure, and U.S. News & World Report ranked the rural medicine program at the Brody School of Medicine third in the nation.

Under Dr. Eakin's leadership, the university achieved doctoral status and added new programs at the bachelor's, master's, and doctoral levels. External funding for grants and contracts grew to more than \$40 million. The university's Joyner Library passed the million-volume threshold and is a member of the prestigious Association of Southeastern Research Libraries.

Also under Dr. Eakin's leadership, the university completed its first major capital campaign, which raised more than \$55 million, and concluded a \$15 + million drive to increase the number of merit-based scholarships available to students, including an assured admission to medical school program for freshmen.

The campus has been transformed with hundreds of millions of dollars of new construction projects and major renovations. Among the highlights are an expanded and renovated library, the Student Recreation Center, Todd Dining Hall, Minges Coliseum, the upper deck at Dowdy-Ficklen Stadium, and the Warren Life Sciences Building at the Brody School of Medicine.

Active in civic and higher education associations, he is a past president of the North Carolina Association of Colleges and Universities and has been a frequent leader of accreditation teams for the Southern Association of Colleges and Schools. He served as a member of the board of directors of the Global TransPark Authority and the Greenville-Pitt Chamber of Commerce.

## Countdown to NCCPA Fall Conference



### July 2006:

- Put your "save the date" card on a bulletin board where you can see it!
- Ask others to attend the conference with you.
- Send a HOT TOPIC suggestion to Angela or Heather ([acobos@barton.edu](mailto:acobos@barton.edu) or [hcampbel@wingate.edu](mailto:hcampbel@wingate.edu))

### August 2006:

- Consider presenting at the conference.
- Talk with other professionals about this opportunity.
- Research possible HOT TOPICS to present.

- Read the conference update email that you receive.

- Celebrate the Beginning of another academic year!

### September 2006:

- Return the Call for Proposals Form.
- On this form indicate what you would like to present on.
- Prepare your presentation for the conference.
- As you work, consider the HOT TOPICS that will be discussed and presented

on at the conference.

### October 2006:

- Register for the conference.
- Ask two other people to register for the conference with you.
- Enjoy fall break.

### November 2006:

- Pack your bags! (Don't forget your toothbrush and Hawaiian shirt!)
- ATTEND THE CONFERENCE AND Have a Good Time!

## Top Ten Reasons to Attend the Fall 2006 Conference:

1. Network with other student affairs professionals
2. Learn about HOT TOPICS in higher education
3. Participate in round table discussions with other professionals in your area of interest or expertise
4. Become a skilled shagger (dance to beach music)
5. Listen to a distinguished scholar
6. Attend informative sessions
7. Socialize at a luau
8. Ask questions during a panel discussion
9. Your chance to wear an ugly Hawaiian shirt
10. Experience the tropics...*it's the closest any state employee will get to an Hawaiian vacation this year*



## **Things You Wish You Knew as a New Professional**

**Thanks to the Past-Presidents for these words of wisdom....**

- I wish I understood the part of the job description that said " and other responsibilities deemed appropriate." That's the "catch all phrase" for the many others things that are not in the job description.
- I wish I understood what "must work some nights and weekends" in the job description meant as well.

**Cheryl Jenkins, Meredith College**

- Keep your resume updated. Each time you get a new job--update your resume!
- I would need to invest in lots of notebooks --Life is a 3-ring Binder--they are a great way to organize your stuff. But now there's more technology so get your handouts in some electronic format. If you have ANY interest in getting your Ph.D. or Ed.D.--do it!
- I'll be a late one on this --so this can be okay too. BUT life only gets busier no matter what your circumstances so do it while you can and have the STAMINA!!
- Enjoy each position you are in and LEARN it well. Continue to be a SPONGE and soak in what you can from those around you.
- Network and stay in touch with others. Your network is a helpful thing!!!!
- Get involved with your state or regional associations of ACPA or NASPA. This will help you as a young professional to get experience and to work with wonderful people and expanding your network and opportunities.
- A degree in Higher Education doesn't limit you to Student Affairs. We can work in many areas on a college campus --Alumni Affairs, Human Resources, Financial Aid, Scholarship programs etc.--some of these areas aren't housed in Student Affairs. This is okay and you can get back to Student Affairs if you want. Sometimes you may have to make a switch due to various life circumstances.
- Enjoy the opportunity you are given every day to impact the lives of students and those around you. It is a gift that we are given in this profession and we do get so much back from the students.
- Keep a healthy perspective in the field of higher education. AND try and keep some balance of work and play. You must set boundaries!!  
Enjoy yourself and stay current in the field.

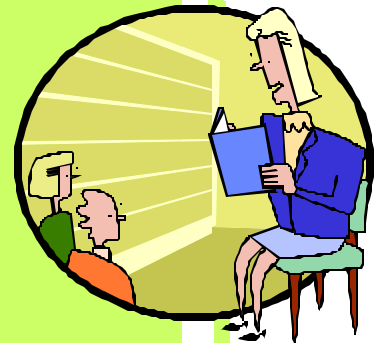
**Shelly Hoover-Plonk, NCSU**

- Learn by observation instead of always asking questions
- Meet as many people as possible early in your job
- Listen carefully before jumping into a discussion
- Stay positive in your outlook
- Seek the advice of a trusted person to navigate politically charged situations
- Keep an honest & open line of communication with co-workers & colleagues
- Get involved, but don't over commit

**Leslie Rank-Pickett, NCSU**

- Sometimes you've got to do things you don't like to do. Just do them!!
- People remember the times you've gone out of your way to help them AND the times you didn't. I thought I knew it all and that the veteran staff members were way out of touch with students. Being more experienced now, I realize that their focus and energy was just put towards different organizational needs. We still care just as much about the students as we did right out of graduate school.

**Shelly Myers, ECU**





## Leadership Programs – Come out! Come out! Where ever you are!

### Leadership Consortium

NCCPA is looking to revamp the Leadership Consortium section of the website into a resource center for leadership program information. We'd like to list every collegiate leadership program in the state. Whether your program operates under academics, honors, grassroots, residential, student activities or is a co-curricular partnership, we want to include you on the website.

- Did you realize the National Clearinghouse for Leadership Programs (NCLP) has only about 7 NC colleges listed as having a leadership program? However, with a quick web search we found at least 35 of the 50 NC colleges and universities have active leadership programs.

We'd also like to include links to leadership associations, conferences and other helpful information for leadership program coordinators. Will you join us?

Please contact Theresa Mathis, President-Elect, at Barton College for more information: [tmathis@barton.edu](mailto:tmathis@barton.edu) Watch for the updated version of the website this summer!



## HOT TOPICS: Focus on Facebook

Facebook is a online social directory that enables users to share information. Launched in February 2004, Facebook is a collection of personal profiles, mostly of college students, advertisements, activities and email messages.

Facebook's website has grown to over 7.5 million people and, according to comScore, ranks as the seventh-most trafficked site in the United States. People with a valid email address from a supported college, high school or company can register for Facebook and create a profile to share information, photos, and interests with their friends.

USA Today reports that more than 6.1 million college students from more than 2,100 schools have profiles — 65% of under grads at four-year colleges and universities. Faculty and staff, as well as many alumni who have school e-mail addresses, also have access. In September, Facebook opened its doors to high-schoolers; 900,000 have signed up so far.

Members can view all profiles of students from their own school; they can search for others by name but can see only a student's name, school and photo. To access someone's full profile, they must ask to be added to his or her list of "friends." Members also can customize profiles to be even more private, allowing access only to other undergrads, for example.

The effects of Facebook activities can be felt all across our nation's campuses. It is an emerging issue that all college personnel from student life to career centers must begin to address and educate themselves on in order to better understand its impact on students.

### ***Check into these Online Resources to learn more about Facebook.***

[Facebook- The Official Site](http://www.facebook.com/about.php)- [www.facebook.com/about.php](http://www.facebook.com/about.php)

[Wikipedia](#)- This is a type of website that allow users to easily add and edit content and is especially suited for collaborative writing.

[The Exponent](#)- Officers train to use Facebook

[Inside Higher Education](#)- The Case of the Missing Papers

[The Villanovian](#)- Facebook Reveals Too Much Information

[ReporterMag.com](#)- The Facebook and the Newest Wave of Social Computing for Us to Surf

[The Brown Daily Herald](#)- The Facebook-Not Just for Students

[Malibu Times](#)- "Pepperdine takes action against student consumption of alcohol"

[Missourian](#)- "MU Examining Facebook Use"

[The Northerner Online](#)- "Facebook postings, photos incriminate dorm party-goers"

[WCFCourier.Com](#)- "Face time: Web site connecting college campuses draws mixed reviews"